

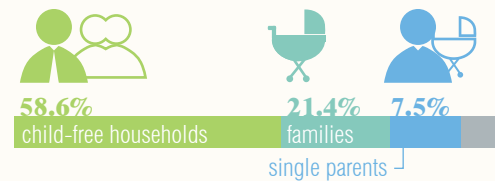


At Blue Zones we focus on the area close to home where we spend 90 percent of our lives. We optimize: the built environment; municipal policies and ordinances; restaurants, schools, grocery stores, and workplaces; social networks; habitat; and inner selves. Rather than relying on individual behavior changes, we focus on optimizing environments to favor better health.

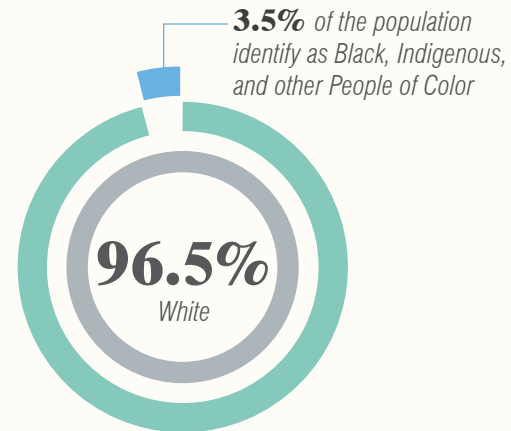
POPULATION

47,051
total population

2.6
average household size

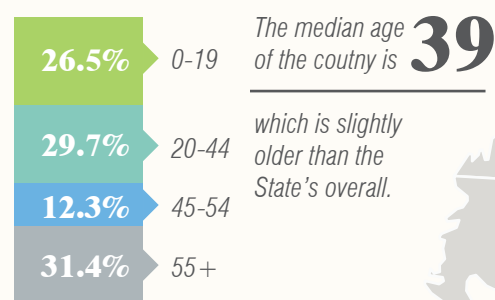


RACE

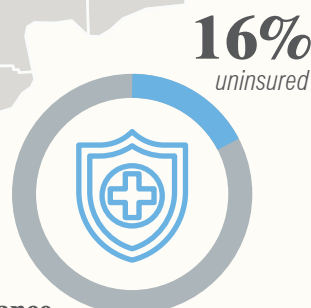


Those of Hispanic or Latino origin made up 10.4% of the population.

AGE



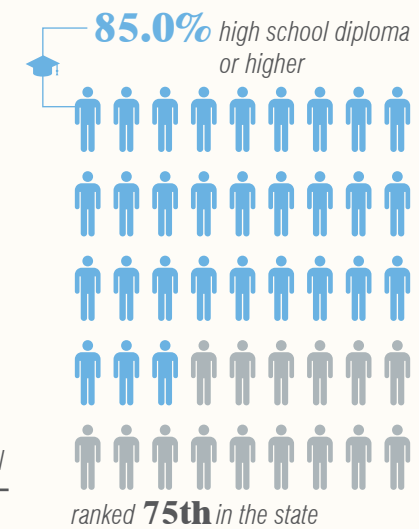
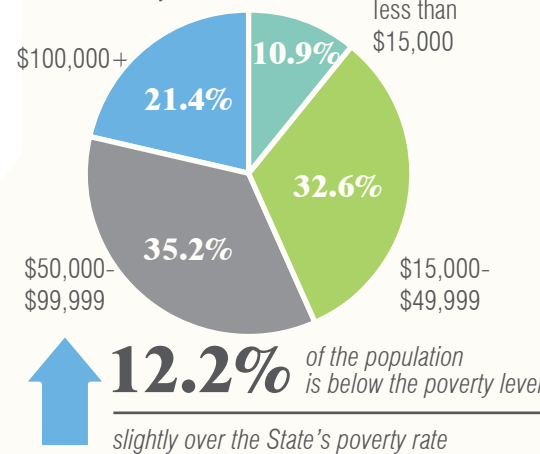
Marshall County is located in northwest Indiana, a half-hour south of South Bend and three hours north of Indianapolis. The county consist of one city (Plymouth, county seat) and five towns – which includes Bremen, Culver, Bourbon, Argos, and LaPaz. This summary graphic is a snapshot of the socio-economic context of the assessment area.



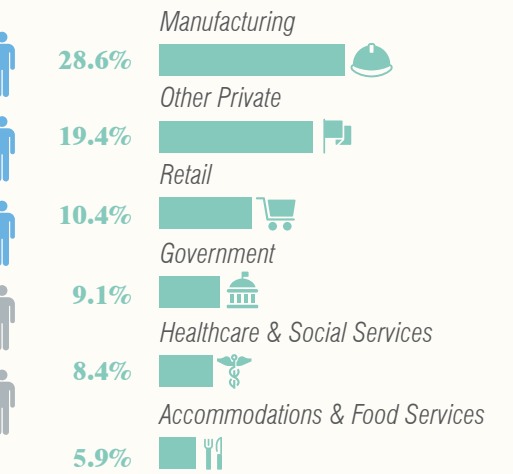
Health Insurance

EDUCATION + INCOME

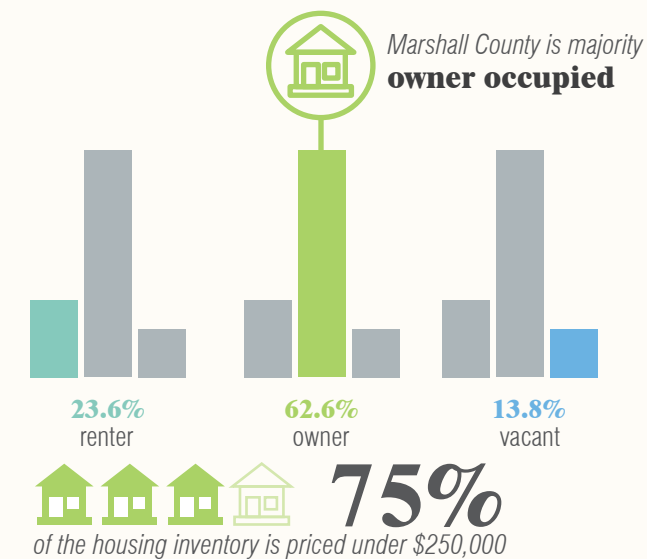
\$55,657 median household income



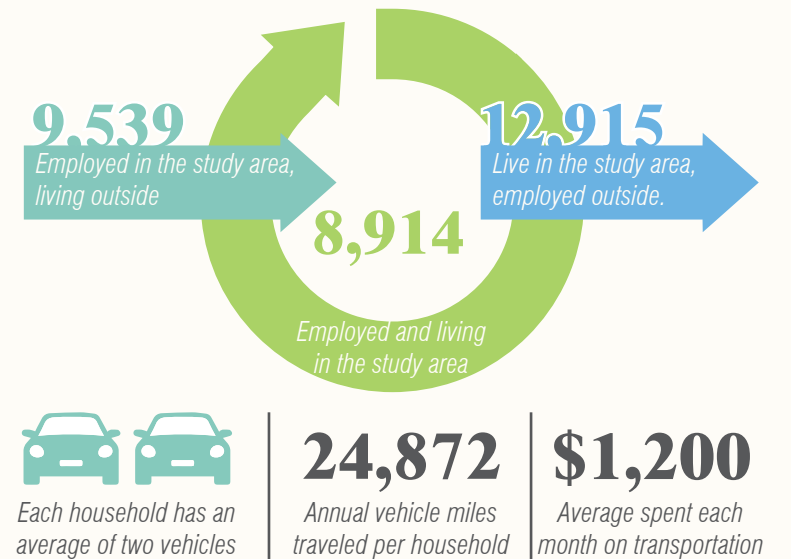
Employment & Earnings by industry



HOUSING

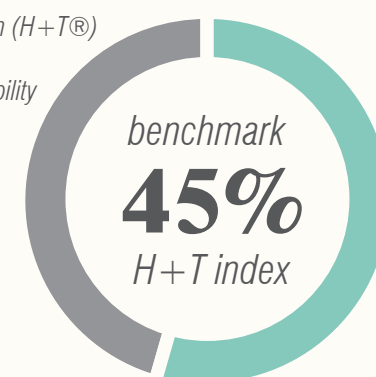


TRANSPORTATION

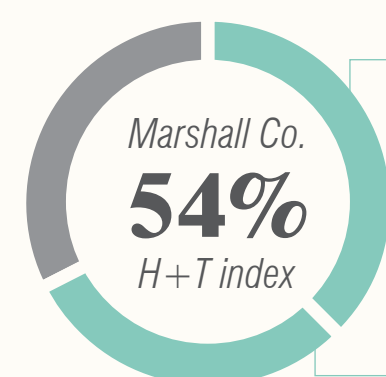


AFFORDABILITY

The Housing and Transportation (H+T®) Affordability Index provides a comprehensive view of affordability that includes both the cost of housing and the cost of transportation at the neighborhood level. Center for Neighborhood Technology



A combined Housing + Transportation index of **45%** is considered affordable.



30% Households in Marshall County spend up to 30% of their income on TRANSPORTATION

24% Households in Marshall County spend up to 24% of their income on HOUSING